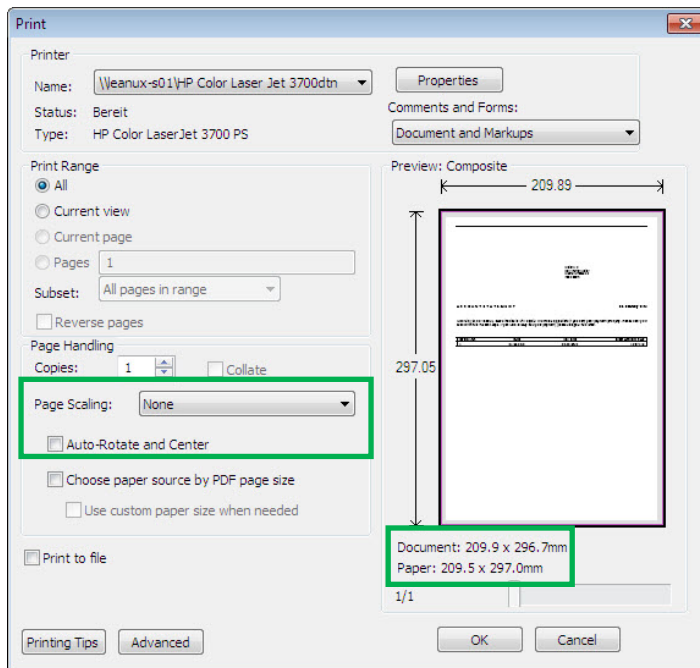
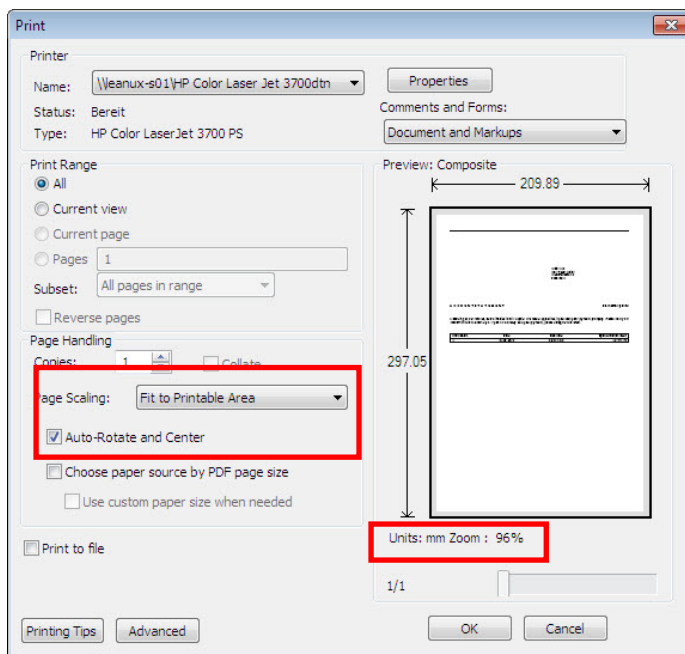


Welcome to ISRlight

Please first configure your printer as described in the PDF "ISRlight_printer_configuration_and_inspection_slips_en.pdf". Print the test invoices as follows and make sure that you select **None** under "**Fit to paper**" and that "**Auto-Rotate and Center**" is **not checked**. Ensure the inpayment slip paper is correctly positioned in the printer.



Correct settings in Windows ?



Incorrect settings. The inpayment slip will be incorrectly printed!